



Sico Laminates

Bed Frame & Vinyl Colors

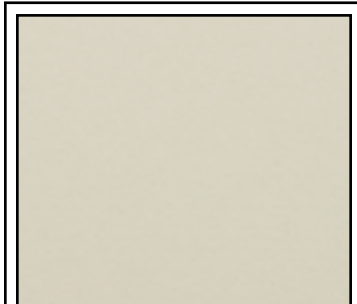
for Sico Wallbeds and Cabinets

(Bed frame paint will match vinyl color.)

Laminate
Color



Frosty White
(FW)

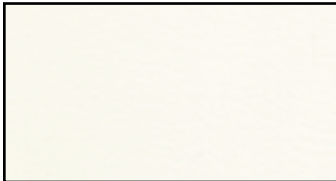


Natural Almond
(NA)

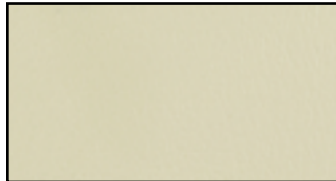


Fusion Maple
(FM)

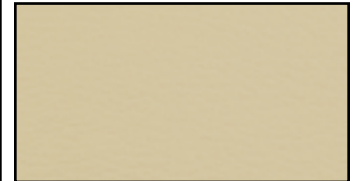
Bed
Frame &
Vinyl
Color



White
(WH)



Almond
(AL)



Sand
(SA)

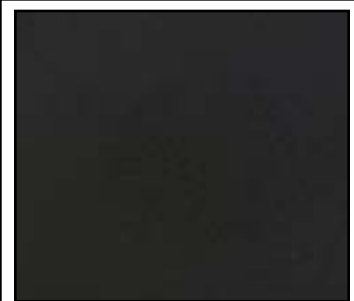
Laminate
Color



Bannister Oak
(BO)

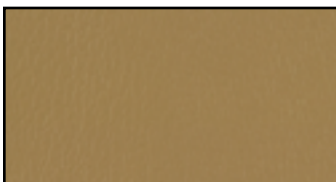


Wild Cherry
(WC)

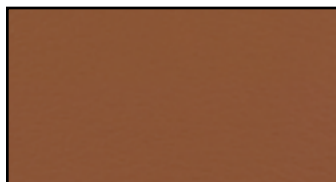


Black
(BL)

Bed
Frame &
Vinyl
Color



Putty
(PT)



Terra Cotta
(TC)



Black
(BL)

Vinyl Specifications

Manufactured to Meet the Following Codes*:

- BIFMA
- Boston Fire Code - Test BFD IX-1
- California Tech Bulletin 117
- Federal Aviation Specification FAR 25.853 (a) & Appendix F Part I (a) (1) (ii)
- Federal Specification A-A-2950A
- Motor Vehicle Safety Standard 302
- Port Authorities of New York & New Jersey
- UFAC - Class 1
- IMO A.652 (16) 8.2 & 8.3

*This term and any corresponding data refer to typical performance in the specific tests indicated and should not be construed to imply the behavior of this or any other material under actual fire conditions.

Vinyl Finishes & Treatments

Advanced Vinyl Protection

- Antimicrobial / Antibacterial Protection
- Antistain Finish / Easily Cleaned
- Superior Abrasion Resistance

400,000 Cycles Wyzenbeek/CFFA-1
(Federal Standard 191-A Method 5304)

- Antistatic Slip Finish
- Cold Crack - 20°F (-28.9°C)
- Heat Sealable
- Mildew Resistant Backing and Face
- Oil Resistant
- Sulfide Stain Resistant / All Colors
- UV Stabilized Pigments

Laminate Specifications

WilsonArt High Pressure Laminate General Purpose (HGS) Type 107

- Physical Properties of General Purpose Laminates
 - NEMA Test
 - Typical Wilsonart Type 107
 - NEMA Standard HGS Thickness:
0.048" ± 0.005"
(1.2mm ± 0.12mm)

Paint Specifications

SICO wallbed frames shall be electrostatically sprayed with a baked on powder coat finish for durability.

The polyester powder coat finish shall meet the following specifications:

- **Recommended film thickness**
2.3 - 3.5 mils or greater
- **Adhesion (ASTM D3359-B)**
There is no lifting of 1/8" squares of coating between scribe lines in crosshatch adhesion using pressure sensitive tape.
- **Pencil Hardness (ASTM D3363)**
2H
- **Impact Resistance: (Modified ASTM D-2794)**
Using standard Gardner impact tester, the coating withstands 160 inch-pounds both direct and reverse without cracking or loss of adhesion.
- **Salt Spray Resistance (ASTM B-117)**
Bonderite 1000 steel panels in a scribed condition exhibit no undercutting after 500 hours in a 5% salt spray at 95% relative humidity. No rusting or blistering occurs on the panel face away from the scribe. After 1000 hours the panel exhibits less than 1/16" undercutting.
- **Humidity Resistance (ASTM D2247)**
Bonderite 1000 steel panels in an unscrewed condition exhibit no effects after 1000 hours of exposure to 100% relative humidity at 100 degrees Fahrenheit.



7525 Cahill Road, Minneapolis, Minnesota 55439
Toll-Free: 800-328-6138, Outside U.S. and Canada: 952-941-1700
Fax: 952-941-6688, e-mail: sales@sicoinc.com

Visit our web site at www.sicoinc.com