



CONTRACT

HOSPITALITY

HEALTHCARE

INSTITUTION

NAVY



Adobe White
US 394



Ivory
US 500



Coral Sand
US 502



Froth
US 501



Surf
US 513



Fjord Blue
US 517



Bristol Blue
US 515



Pink
US 503



Alabaster
US 396



Parchment
US 385



Shell
US 402



Sand
US 384



Dusty Jade
US 417



Turquoise
US 419



Dutch Blue
US 518



Mauve
US 415



Taupe
US 410



Bone
US 404



Peach
US 406



Vicuna
US 401



Northwoods
US 528



Grotto
US 426



Wedgewood
US 414



Tea Rose
US 416



Putty
US 403



Bisque
US 409



Rose
US 412



Doe
US 519



Lilac
US 508



Sage
US 526



Space Blue
US 353



Rouge Red
US 505



Gray Moss
US 525



Dewberry
US 424



Sunset
US 521



Camel
US 387



Crocus
US 433



Artichoke
US 527



Royal
US 354



Raspberry
US 362



Dove
US 413



Woodrose
US 423



Paprika
US 370



Oak
US 421



Deep Violet
US 511



Olive Green
US 529



Regimental Blue
US 345



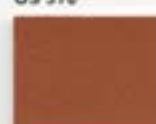
Dark Cherry
US 507



Greystone
US 425



Chestnut
US 375



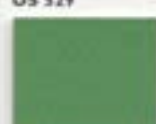
British Tan
US 365



Terra Cotta
US 376



Grape
US 509



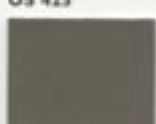
Alpine
US 530



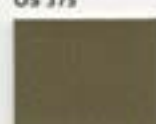
Imperial Blue
US 432



American Beauty
US 360



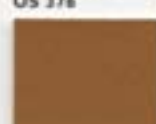
Gunmetal
US 392



Bronze
US 523



Gingersnap
US 349



Cinnamon
US 377



Sangria
US 506



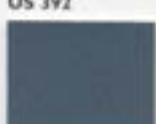
Forest
US 344



Sky Blue
US 516



Tomato
US 358



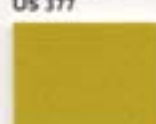
Blue Ridge
US 427



Mocha
US 381



Cinnabar
US 520



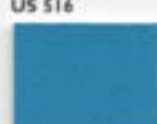
Goldenrod
US 324



Plum
US 361



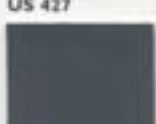
Yew Green
US 350



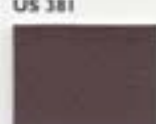
Capri Blue
US 514



Rosalee
US 504



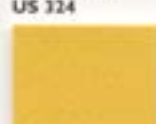
Graphite
US 429



Rustic Brown
US 522



Claret
US 357



Golden Corn
US 524



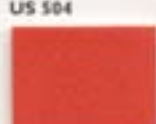
Dark Purple
US 512



Emerald
US 343



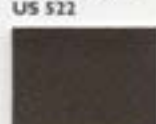
China Green
US 434



Mandarin Orange
US 372



Black
US 393



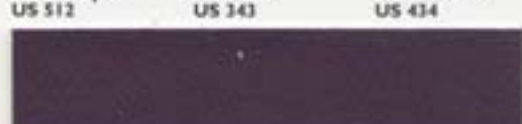
Espresso
US 383



Burgundy
US 364



Sun Yellow
US 322



Concord
US 510



Spirit Millennium™



Pattern	Roll Width	Roll Size	Weight per Lin. Yd.	MVSS-302	Cal. Fire Code 117	Ultraviolet Stable Pigment	Mildew Resistant	Fed. Spec. CID A-A-2550	HIFMA Class 1	FAA, FAR 25.853	Port Authority of NY/NJ	Boston Fire Code	Sulfide Stain Resistant	Oil Resistant	Stain Diagnostic	ASTM 1426 Pink Stain Test	Cold Crack	Abrasion #8 Cotton Duck	Pattern Repeat
All American (AM)	54"	35	28.8	X	X	X	X	X	X	X	X	X	X	X	X	X	-20"	250,000	N/A
Bellingham (BI)	54"	30	34.0	X	X	X	X	X	X	X	X	X	X	X	X	X	-20"	250,000	24"
Bourbon Street (BB)	54"	30	28.2	X	X	X			X				X	X	X		-20"	250,000	N/A
Burkshire (BRK)	54"	30	37.0	X	X	X	X	X	X	X	X	X	X	X	X	X	-20"	250,000	N/A
Chama (CY)	54"	35	26.0	X	X	X	X		X				X	X	X	X	-20"	250,000	N/A
Chelsea (CH)	54"	30	34.0	X	X	X	X	X	X	X	X	X	X	X	X	X	-20"	250,000	17 1/2"
City Lights (CL)	54"	30	37.0	X	X	X	X	X	X	X	X	X	X	X	X	X	-20"	250,000	N/A
Dolphin (DOL)	54"	40	26.8	X	X	X	X		X				X	X	X	X	-20"	250,000	N/A
English Pub (EP)	54"	30	37.0	X	X	X	X	X	X	X	X	X	X	X	X	X	-20"	250,000	N/A
Expressions (EX)	54"	30	37.0	X	X	X	X	X	X	X	X	X	X	X	X	X	-20"	250,000	N/A
Gladstone (GE)	54"	30	30.5	X	X	X	X		X				X	X	X	X	-20"	250,000	N/A
Jigsaw (JS)	54"	30	34.0	X	X	X	X	X	X	X	X	X	X	X	X	X	-20"	250,000	17 1/2"
Marblestone (MS)	54"	30	37.0	X	X	X	X	X	X	X	X	X	X	X	X	X	-20"	250,000	N/A
NaugaLeather (EE/MI)	54"	35	28.2	X	X	X	X		X				X	X	X	X	-20"	500,000	N/A
Nauga Soft (PR)	54"	35	28.2	X	X	X	X		X				X	X	X	X	-20"	1,000,000	N/A
NaugaTek (NTK)	54"	35	30.8	X	X	X	X	X	X	X	X	X	X	X	X	X	-20"	250,000	N/A
Neochrome II (NEO)	54"	30	37.0	X	X	X	X	X	X	X	X	X	X	X	X	X	-20"	250,000	N/A
Oakwood (OAK)	54"	30	31.8	X	X	X	X	X	X	X	X	X	X	X	X	X	-20"	250,000	9 1/2"
Oven (OX)	54"	40	23.3	X	X	X			X				X	X	X	X	-20"	250,000	N/A
Phoenix (PH)	54"	30	36.5	X	X	X	X	X	X	X	X	X	X	X	X	X	-20"	250,000	N/A
Rogue II (RU)	54"	30	33.5	X	X	X			X				X	X	X		-20"	250,000	N/A
Southampton (SN)	54"	30	34.0	X	X	X	X	X	X	X	X	X	X	X	X	X	-20"	250,000	13"
Spirit Millennium (US)	54"	30	37.0	X	X	X	X	X	X	X	X	X	X	X	X	X	-20"	250,000	N/A
Sta-Soft (STA)	54"	30	28.5	X	X	X	X		X				X	X	X	X	-20"	250,000	N/A
Stratford/Surfside (SF)	54"	30	29.7	X	X	X	X		X				X	X	X	X	-20"	250,000	N/A
Tusk (TK)	54"	30	31.8	X	X	X	X	X	X	X	X	X	X	X	X	X	-20"	250,000	N/A
Twilight (TL)	54"	30	33.5	X	X	X	X	X	X	X	X	X	X	X	X	X	-20"	250,000	N/A
Universal (MT)	54"	40	26.0	X	X	X	X		X				X	X	X	X	-20"	250,000	N/A
Verona (VA)	54"	30	34.0	X	X	X	X	X	X	X	X	X	X	X	X	X	-20"	250,000	4 1/2"
Zodiac (ZD)	54"	30	36.5	X	X				X				X	X			-20"	250,000	N/A

Disinfectability

Naugahyde with Advanced BeautyGard[®] has been formulated to achieve a superior level of disinfectability with disinfectant products containing sodium hypochlorite (common household bleach) diluted 1:10.

Serviceability

Naugahyde with Advanced BeautyGard[®] provides outstanding protection in difficult medical and healthcare environments.

• This product contains agents to protect it against bacterial and fungal micro-organisms.



Advanced BeautyGard[®] protective top coat finish is produced from environmentally friendly materials and processes and is technically formulated to achieve the highest performance standards.



Visit our website at: <http://www.naugahyde.com>

NATIONAL SALES OFFICE (877) 628-4248 OR (574) 773-5983
 NAUGAHYDE ENGINEERED PRODUCTS
 1001 N. MAIN, SUITE 4
 NAPPANEE, IN 46350



CUSTOMER SERVICE (800) 873-8800 OR (608) 873-4431
 NAUGAHYDE ENGINEERED PRODUCTS
 501 SOUTH WATER STREET
 STOUGHTON, WI 53589-2481

FOR MEMO SAMPLES CALL (800) 873-8800

